

The New Hampshire Local Energy Working Group (LEWG) Draft

The following document describes a potential working group that more efficiently serves the same roles as currently offered by the Local Energy Committee Working Group (LEC WG) and the Municipal Energy Working Group (MEWG).

Mission/Purpose of the Local Energy Working Group (LEWG)

To provide collaborative guidance and technical support to Local Energy Committees/Commissions (LEC's), municipalities, schools, and other political subdivisions* seeking to reduce energy use, minimize energy costs, and/or reduce fossil-fuel consumption.

To accomplish this, the LEWG will foster collaboration among public, private and non-profit entities to identify and support the development of the necessary resources and tools; interconnect community leaders to establish a network of local energy planners; and provide a clearinghouse to facilitate the communication of information and ideas.

Outcomes for Local Energy Working Group (LEWG)**

Short Term Outcomes 1-3 years

- The Energy Work Group will be the conduit for connecting energy committee members, and municipal and school staff/elected officials to each other throughout the state through peer to peer networking that is established and self sustaining.
- An effective NH portal will be established to act as a clearinghouse of information on best practices, projects throughout the state, funding and technical assistance opportunities, and resources and guides that are available for LEC's, municipalities and schools to utilize.
- Teams with work plans that meet regularly and are well represented will be established to address the barriers in the following areas: Education, Outreach and Technical Assistance; Policy; and Financing.
- The Energy Work Group will annually identify the priority tools and resources needed by LEC's and municipalities to achieve significant reductions in energy use, cost or fossil fuel consumption.

Medium Term Outcomes 3-5 years

- 50% of NH communities will possess increased knowledge and skill through the provision of ongoing *outreach, education and technical assistance*, which will enable them to take on increasingly sophisticated planning and project management efforts
- 25% of Municipalities will integrate energy planning into all aspects of municipal facilities, vehicles and operations.
- 25% of Schools will integrate energy planning into all aspects of municipal facilities, vehicles and operations.

Long Term Outcomes 5+ years

- Total community fossil-fuel-based energy consumption will be reduced 50% below 2005 levels by 2025

*Political subdivisions include: federal, state, county, townships. Villages, RPC's, and other quasi government organizations.

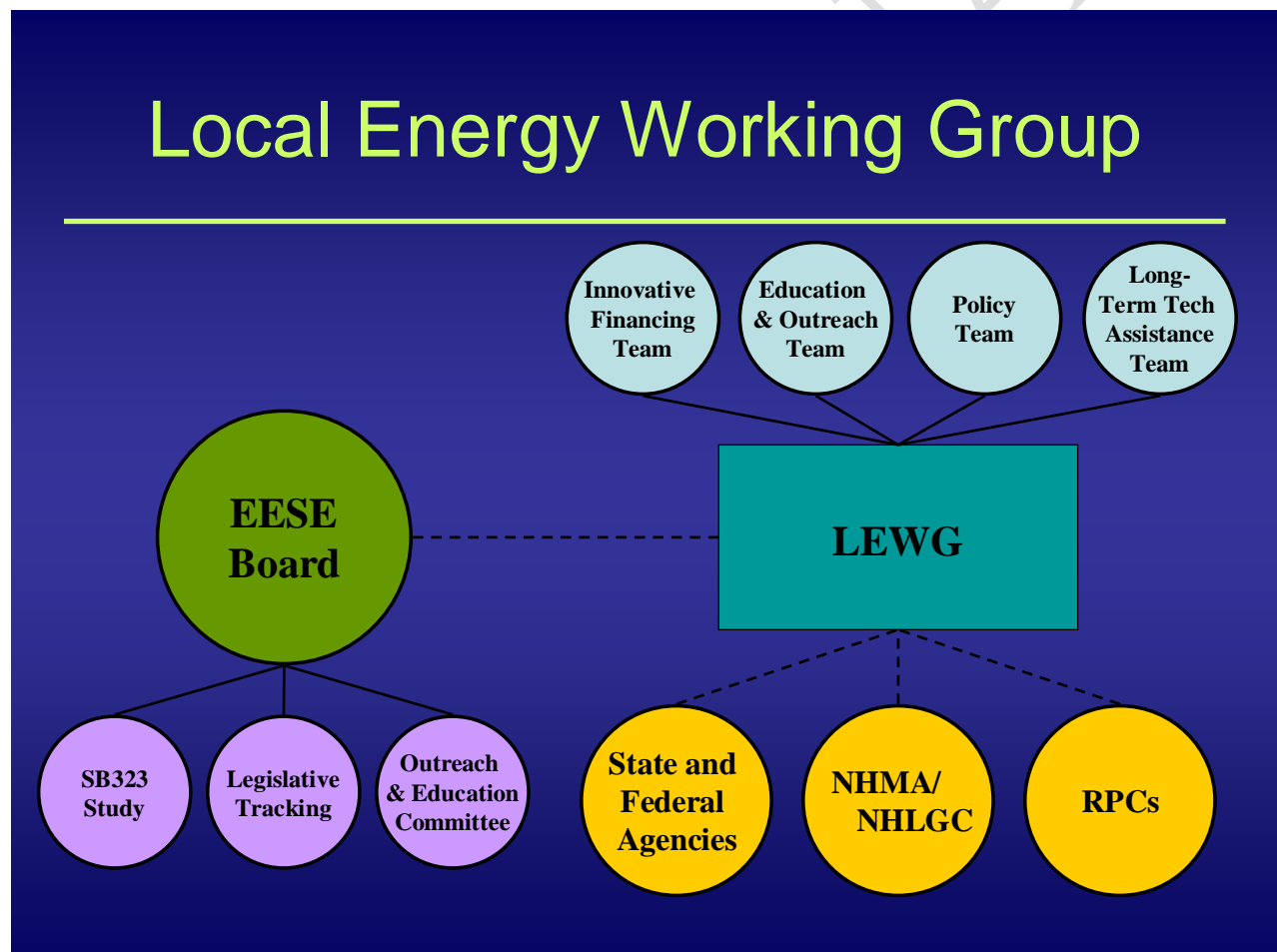
**Outcomes adhere to goals in other state documents such as the New Hampshire Climate Action Plan, and the Energy Plan.

Composition and Duties of Members

The composition of the LEWG can include representation from political subdivisions*, energy committees, relevant community stakeholders, energy professionals, and non-profits. Representatives serve on an annual basis, and agree to attend and participate in regularly scheduled meetings; form, adopt and contribute to the Team Work Plans; use promote and contribute content in support of local energy conservation. *The LEWG will be co-chaired by Julia Dundorf of Clean Air-Cool Planet and Timothy Fortier of the NH Local Government Center.*

Input and Questions

Any input or questions on this draft can be submitted to Julia Dundorf, jdundorf@cleanair-coolplanet.org or (603) 957-4350.



*Political subdivisions include: federal, state, county, townships. Villages, RPC's, and other quasi government organizations.
**Outcomes adhere to goals in other state documents such as the New Hampshire Climate Action Plan, and the Energy Plan.